

# Free Public Clinic - Ocean View

Provided by: Kona Community Hospital

The Medical Van is usually in Ocean View for the First Two Weeks Each Month - open on Mon., Tue., and Thurs. from 10:00 am until 4:00 pm

## General Practice Public Clinic with Nurse Practitioner on duty



**Jackie Aprin (Nurse Practitioner)** is on duty to help you with your medical needs.

She is equipped to do health exams, perform medical tests, give advice, and write Prescriptions.

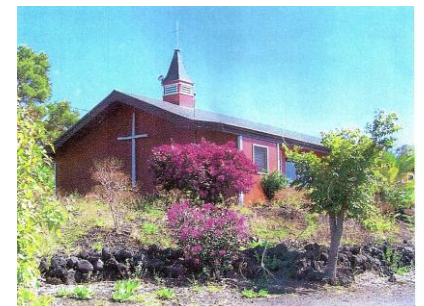


If what you need isn't listed here, drop by and ask her for her advice

**Physicals include School, Sports, Business, and CDL (until May 2014)**

**Health Exams and Tests include TB, Blood Pressure, Blood Sugar, Urinalysis, and Pregnancy. If you use hearing aids, ask her about Ear Wax Removal**

**Vaccinations, when available**



St. Jude's Church

We are less than a mile from the Ocean View Market & Post Office

**Located in Lower Parking Lot of St. Jude's Episcopal Church**

The southeast Corner of Keaka Pkwy  
and Paradise Circle

St. Jude's Episcopal Church  
92-8606 Paradise Circle  
Ocean View, HI 96737